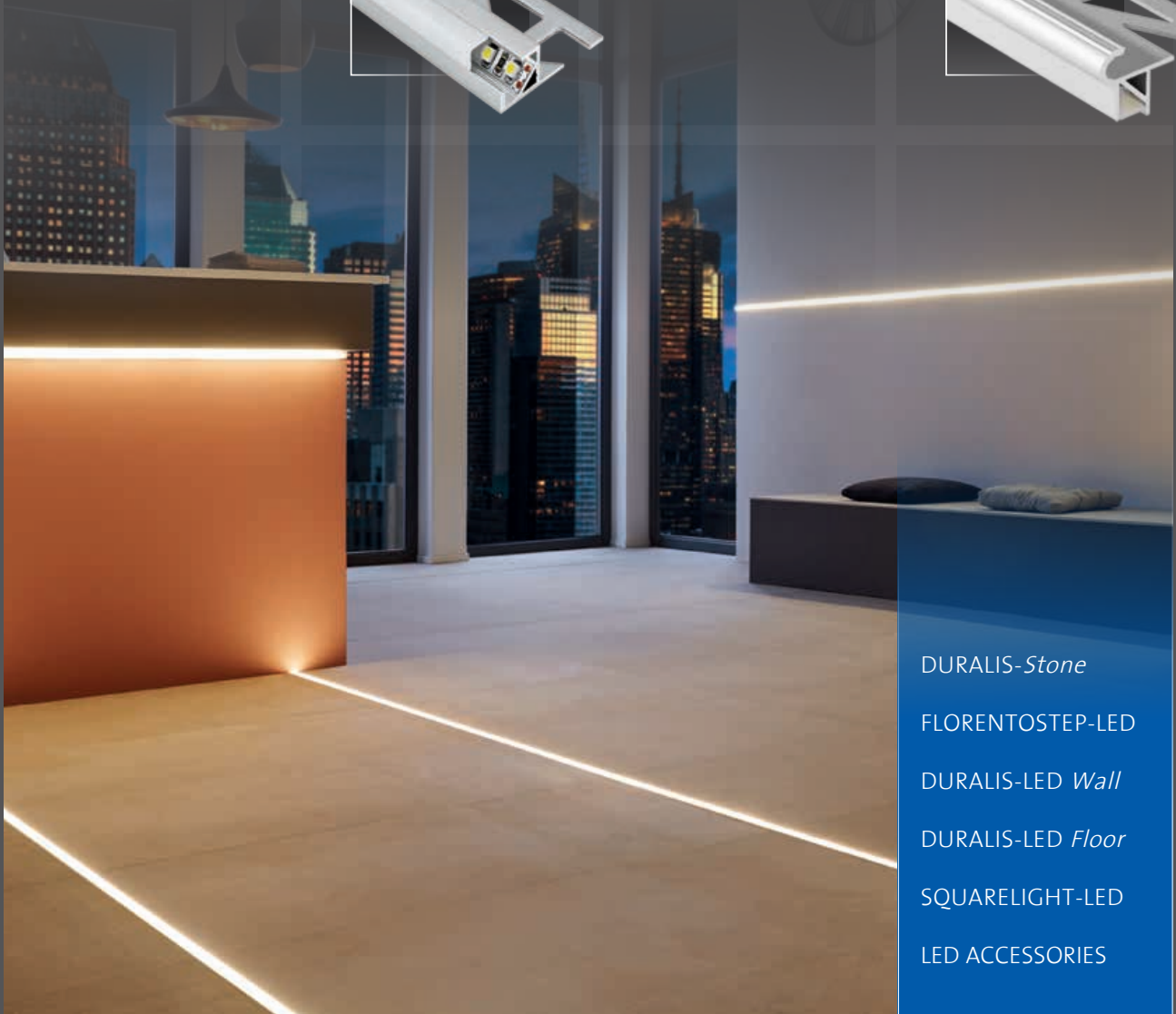
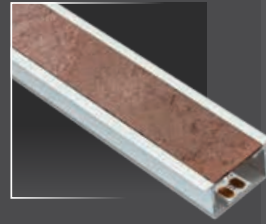


ILLUMINATED FOR TILE AND NATURAL STONE SURFACES TILE PROFILES

DURAL



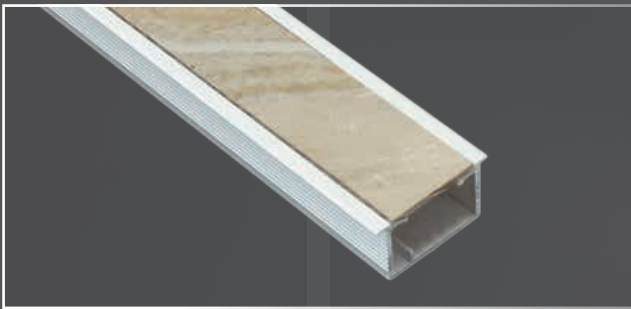
DURALIS-*Stone*
FLORENTOSTEP-LED
DURALIS-LED *Wall*
DURALIS-LED *Floor*
SQUARELIGHT-LED
LED ACCESSORIES



DURALIS-*Stone*

- Illuminated skirting profiles with a genuine natural stone inlay for extraordinary light accents on wall surfaces.
- For tiled flooring surfaces and furniture panelling.

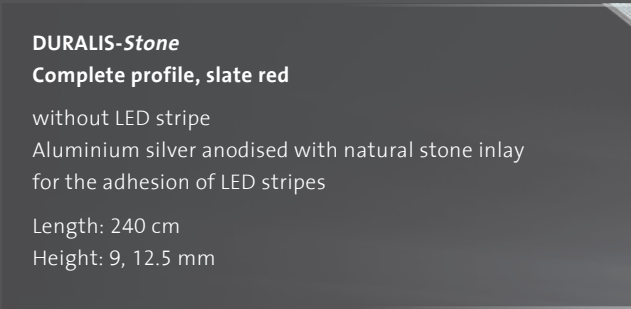
- An absolute world first!
- Genuine natural stone.
- Use both lit and unlit – two effects in one product.



DURALIS-Stone
Complete profile, slate beige

without LED stripe
Aluminium silver anodised with natural stone inlay
for the adhesion of LED stripes

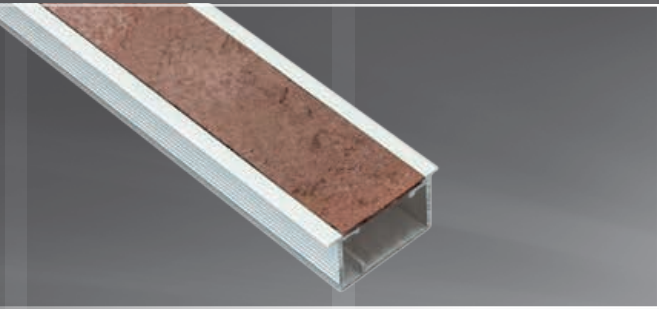
Length: 240 cm
Height: 9, 12.5 mm



DURALIS-Stone
Complete profile, slate red

without LED stripe
Aluminium silver anodised with natural stone inlay
for the adhesion of LED stripes

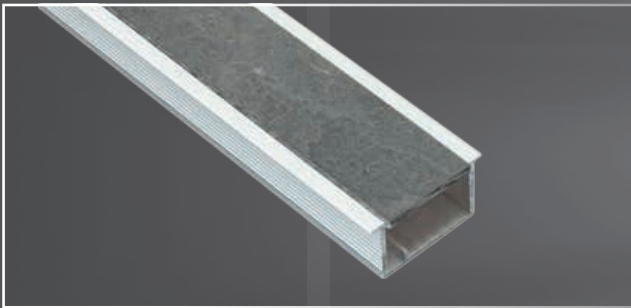
Length: 240 cm
Height: 9, 12.5 mm



DURALIS-Stone
Complete profile, slate grey

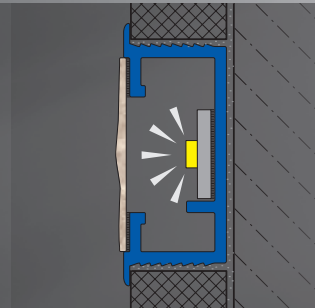
without LED stripe
Aluminium silver anodised with natural stone inlay
for the adhesion of LED stripes

Length: 240 cm
Height: 9, 12.5 mm



■ If you're looking for something new and unusual, then DURALIS-Stone decorative profiles from DURAL are the perfect find. The profile cover is cut from genuine natural stone.

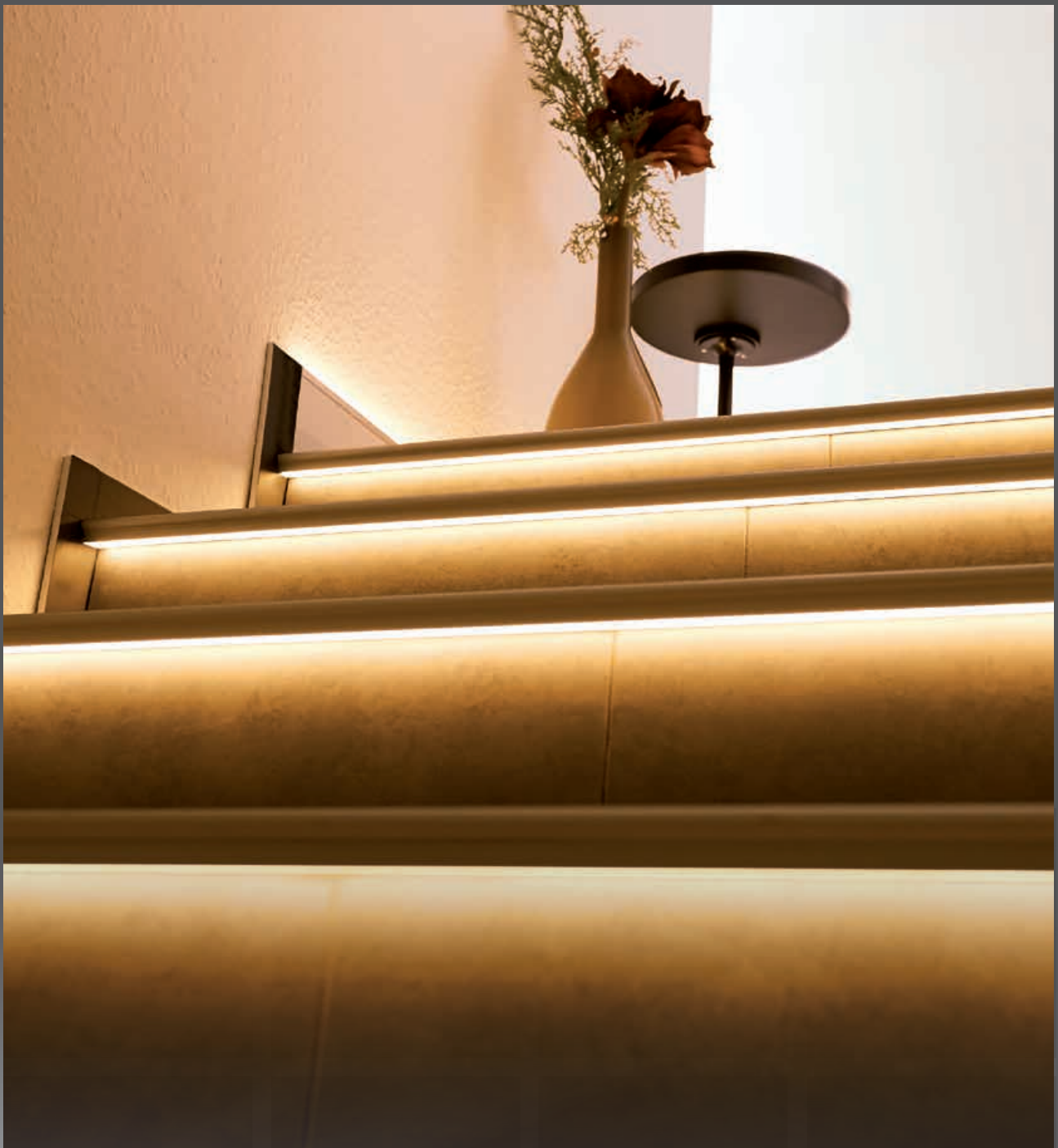
■ The stone profiles are installed using the classic thin-bed mortar procedure, or wall-mounted in furniture panels using adhesive.
■ For lighting accessories, see page 10 / 11.



DURALIS-Stone lit



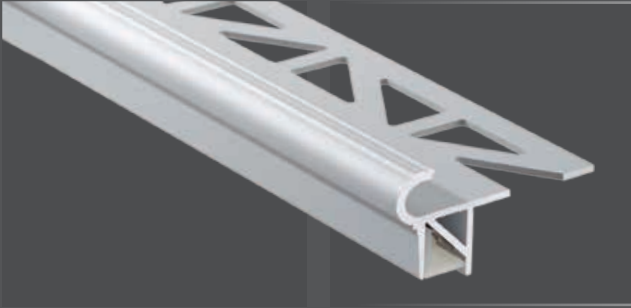
DURALIS-Stone unlit



FLORENTOSTEP-LED

- Illuminated stair nosing profiles with a Florentine design for steps and stairs with tiled or natural stone surfaces, suitable for installation both internal and external.

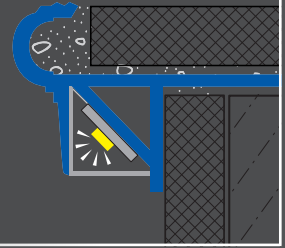
- High quality lighting for steps and stairways.
- Extremely easy to install.
- An exceptional price: performance ratio.



FLORENTOSTEP-LED

without LED stripe
Aluminium silver anodised
for the adhesion of LED stripe

Length: 250 cm
Height: 9, 11 mm



■ The highly decorative FLORENTOSTEP stair nosing profile is now also available in an illuminated LED variant. The timeless, elegant Florentine classic design and high loading capacity for the safe protection of step edges in all areas are further enhanced by the use of modern, bright LED stripes.

■ Illuminated stair nosing profiles offer a great deal in terms of visible safety.

■ For LED stripes – also suitable for outdoor use – and a comprehensive range of control and connection accessories, see page 10 / 11.



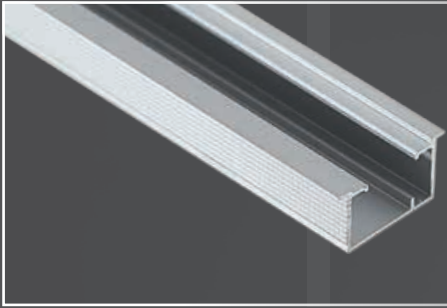


DURALIS-LED *Wall*

DURALIS-LED *Floor*

■ LED skirting profiles illuminate tiled and natural stone floor and wall surfaces with a soft light.

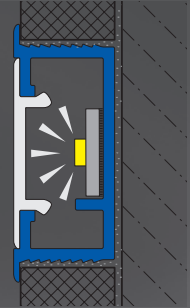
■ Set special moods, making an area bright and cheery or create an interior atmosphere of dimmed lighting for bathrooms, kitchens and living areas.



**DURALIS-LED Wall
with edge cover**

without cover and LED stripe
Aluminium silver anodised
with marking for adhesion
of LED stripes – IP 20 / IP 65

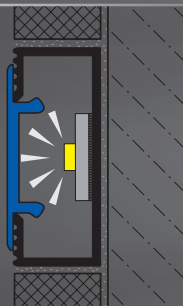
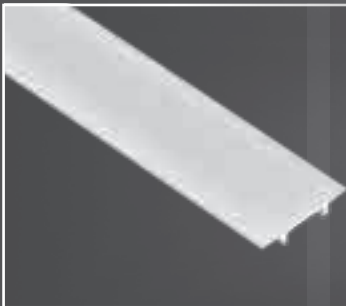
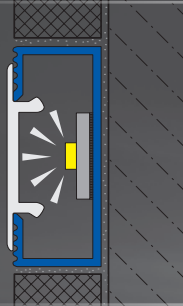
Length: 250 cm, Width: 20 mm
Height: 9, 12 mm



DURALIS-LED Wall

without cover and LED stripe
Aluminium silver anodised
for adhesion of LED stripes – IP 20 / IP 65

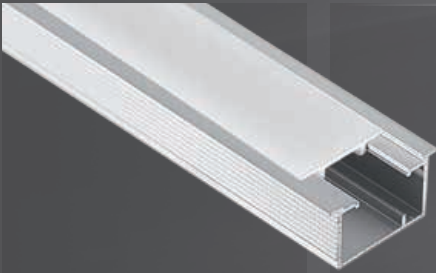
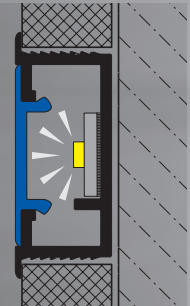
Length: 250 cm, Width: 20 mm
Height: 8 mm



DURALIS-LED Cover

Diffusion plate for
DURALIS-LED-profiles
with and without
protective edge cove
white translucent

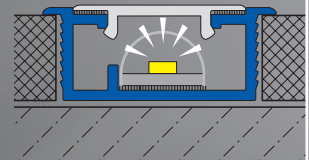
Length: 250 cm



**DURALIS-LED Floor
Complete profile with cover**

without LED stripe
Aluminium silver anodised
for the adhesion of LED stripes
protection class IP 65

Length: 250 cm
Installation height: 8 mm
Height: 9, 12.5 mm

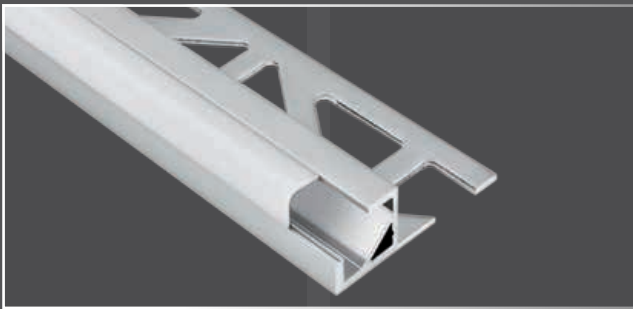


- DURALIS-LED Floor is ideal for installation in flooring both indoors and outdoors and DURALIS-LED Wall is the perfect choice for walls in living spaces or wet areas.
- The LED-Profiles Wall and Floor are installed as normal using the thin-bed mortar procedure and are suitable for use with all tile and natural stone thicknesses starting from 8 mm.
- Connection materials, control units and 24 V DC LED stripes with the corresponding matched transformers in a range of power ratings are available as accessories on page 10 / 11.



SQUARELIGHT-LED

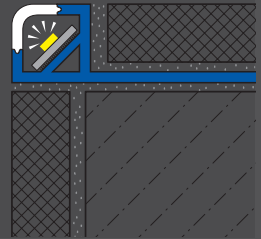
- A bright future for ceramic surfaces!
Modern LED technology is lighting up edges, terminations and transitions magnificently.
- The LED basic profiles are laid as normal in the tile adhesive.
- The LED stripes are installed according to the protection class for wet or humid areas at a safe 24 V DC.



SQUARELIGHT Complete profile

without LED stripe
Aluminium silver anodised
including white translucent cover,
rounded edges, polystyrene

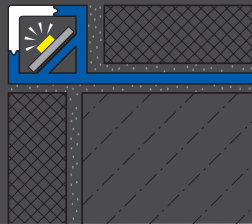
Length: 250 cm
Installation height: 9, 11 mm



SQUARELIGHT Complete profile

without LED stripe
Aluminium silver anodised
including white translucent
cover, square, in polystyrene

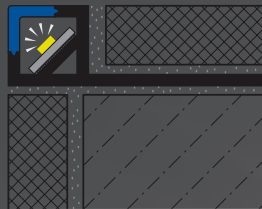
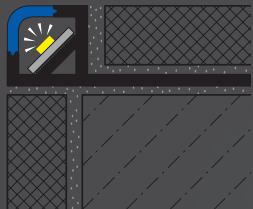
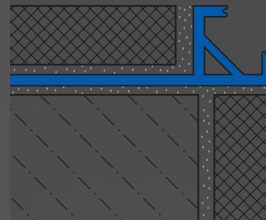
Length: 250 cm
Installation height: 9, 11 mm



SQUARELIGHT Basic profile

Aluminium silver anodised
with strut for gluing
of LED stripes

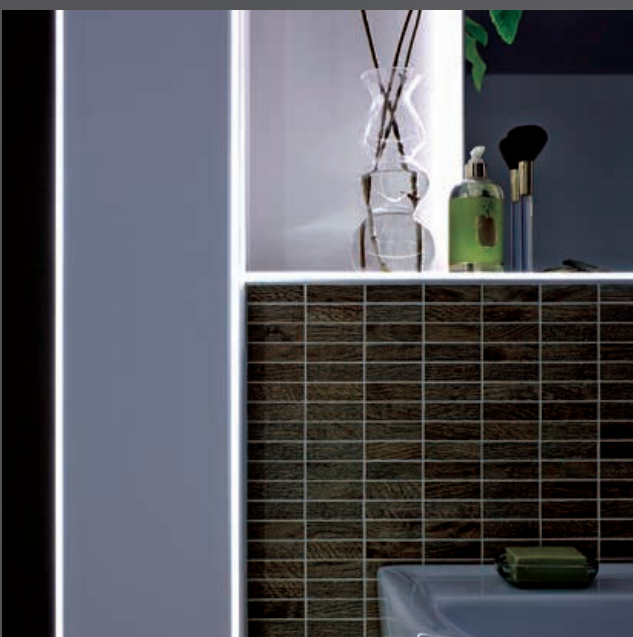
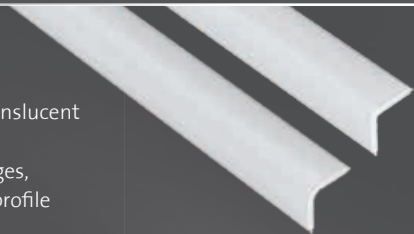
Length: 250 cm
Installation height: 9, 11 mm



SQUARELIGHT Cover

Individual, white translucent
polystyrene
square, rounded edges,
to match the basic profile

Length: 250 cm
Installation height: 9, 11 mm



- The SQUARELIGHT complete profile consists of the basic profile with a strut for gluing of LED stripes and the white translucent cover with the diffuse light function for LED illumination. The basic profile and covers are also available individually.
- Matching LED stripes are available in two protection classes: IP 20 for installation in living areas and IP 65 for wet or humid areas.
- LED stripes and the associated transformers to match the LEDs in various power ratings and an extensive selection of connection materials on page 10 / 11 are also part of the SQUARELIGHT range.

LED-ACCESSORIES

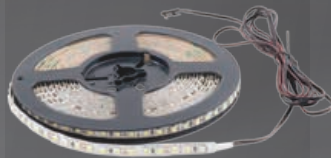
LED stripes, controller, switches, dimmer switches, transformers and connection and extension cable

- The complete range of LED accessories offers everything you need to install, wire and control for the illuminated profiles by DURAL based on a 24 V DC power supply.
- Please note that cut LED stripes with silicone correspond to protection class IP 20 only!
- Installation and set-up should be carried out by authorised and qualified technicians only. Operating devices must be suitable for use with LED modules.



LED STRIPES

IP 20 for living areas
IP 65 with a silicone cover for wet rooms or bathrooms
8 mm, 2.700 – 2.900 K, CRI > 80, 7 W/m
Self-adhesive, stripes can be divided every 5 cm



LED-STRIPES coloured-white*

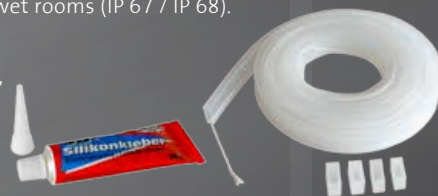
RGB-W, dimmable with accessories and remote control for colour change
*) on request



LED-WaterProtect

A set to protect LED stripes with protection class IP 20 from penetrating water, for use in showers and wet rooms (IP 67 / IP 68).

This set includes:
5 metres of IP 68 silicone tubing,
an LED stripes insertion tool,
4 end caps and
3D silicone adhesive, 50 mg



BLUETOOTH MODULE

Innovative control of LED profiles from a Smartphone or Tablet via a Bluetooth connection.

The “proxi by silvair” control app can be downloaded free of charge:



ON/OFF TOUCH SWITCH

For surface mounting,
with blue LED and
6-way distribution box,
max. 36 W
plastic housing
grey



ON/OFF DIMMER SWITCH

For surface mounting,
with green LED and
6-way distribution box,
max. 36 W
plastic housing
grey



LED RC-RECEIVER

For up to 6 radio-controlled
recessed dimmers and
table dimmers
Input: 24 V DC
Output: 24 V DC
max. 4 x 25 W



REMOTE CONTROL

With bracket



TOUCH-SENSOR SWITCH

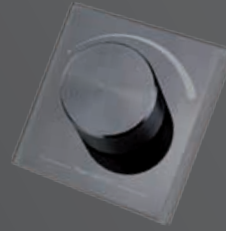
For flush mounting,
with audible acknowledge-
ment signal, dimmer
and memory function,
max. 72 W
Stainless steel finish



LED RC-DIMMER

Recessed wall dimmer,
available in black
or white

Table dimmer,
available in black



TRANSFORMERS 15 W

Primary: 200-240 V AC
secondary: 24 V DC
with JMT socket
15 W with 2 connections



TRANSFORMERS 30 W

Primary: 200-240 V AC
secondary: 24 V DC
with JMT socket
30 W with 4-way
distribution



TRANSFORMERS 50 W

Primary: 200-240 V AC
secondary: 24 V DC
with JMT socket
50 W with 6-way
distribution



DISTRIBUTION BOX

6-way distribution box
Plastic housing
Cable: 10 cm



EXTENSION CABLE

2.50 m
JMT plug /
JMT socket



TWIN CABLE

For the connection
of several lights
to a single transformer
1 JMT mini-plug /
2 JMT mini-sockets
5 cm



CONNECTION AND EXTENSION CABLE

For LED stripes
Clip / JMT plug 200 cm
Clip / Clip 20 / 200 cm



CONNECTION CLIP

For the direct connection
of LED stripes,
plastic, 10 mm



DURAL is a comprehensive provider of floor-level shower systems, profiles and matting systems for walls and floors



Stair-edge profiles

Floor level shower systems

LED profiles and accessories

Skirting

Balconies / Terraces / Entranceways

Tactile orientation aids

Doormat systems

Profile systems for parquet, laminate, carpet and designer flooring

Tile profiles
Expansion joint profiles
Z-FLEX

Matting systems for decoupling, drainage, sealing and insulation

Recommended by:

DURAL GmbH
Südring 11
D-56412 Ruppach-Goldhausen
Tel. +49[0]2602/9261-0
Fax +49[0]2602/9261-50
info@dural.com
www.dural.com